

# Sim Shalom

THE NEWSLETTER OF TEMPLE BETH ISRAEL, HARLINGEN

FALL 2022

## TEMPLE BETH ISRAEL

1702 E. Jackson Ave.  
PO Box 3398  
Harlingen, TX 78551  
(956) 423-2928  
harlingentemple.com

## RABBI FRANK JOSEPH

214-293-6515  
frank@  
rabbifrankjoseph.org

## TRUSTEES

President  
Richard Fourzan

Vice President  
Bruce Landsman

Secretary  
Bill Berg

Treasurer  
Alma Russek

Members  
Samuel Barrios  
Dr. Stan Fisch  
Abby Warshowsky

# L'SHANAH TOVAH!!



WISHING YOU A HAPPY, HEALTHY,  
PROSPEROUS, PEACEFUL NEW YEAR!

— YOUR TEMPLE BOARD OF DIRECTORS  
& RABBI FRANK JOSEPH

## FROM THE RABBI



Shanah tovah!

In Isaiah 54:13, we read, "All your children shall be taught of the L-rd, and great shall be the peace of your children."

In Deuteronomy 6:6-7, we read, "And these words which I command you this day shall be upon your heart, and you shall teach them diligently unto your children."

In Proverbs 22:6, we read, "Educate a child according to his way; even when he ages, he will not depart from it."

CONTINUED ON PAGE 9

## FALL CALENDAR

*Jewish holiday beginning with erev*

Sept 25-27 Rosh Hashanah  
 Oct 4-5 Yom Kippur  
 Oct. 9 Sukkah building  
 Oct 14 Shabbat dinner in the sukkah  
 Oct 9-16 Sukkot  
 Oct. 16 Hoshanah Rabah  
 Oct 16-17 Shemini Atzeret  
 Oct 17-18 Simchat Torah  
 Dec 9-10 Bar/Bat Mitzvah possibly offsite  
 Dec 18-26 Chanukah  
 Dec 23 Chanukiah Shabbat service

- Rabbi-led shabbat/festival/shacharit services
- Jewish holiday beginning with erev
- Religion school meets

### September 2022

Su	Mo	Tu	We	Th	Fr	Sa
					2	3
4	5	6	7	8	9	10
11	12	13	14	15	16	17
18	19	20	21	22	23	24
25	26	27	28	29	30	

### November 2022

		1	2	3	4	5
6	7	8	9	10	11	12
13	14	15	16	17	18	19
20	21	22	23	24	25	26
27	28	29	30			

### October 2022

Su	Mo	Tu	We	Th	Fr	Sa
						1
2	3	4	5	6	7	8
9	10	11	12	13	14	15
16	17	18	19	20	21	22
23	24	25	26	27	28	29
30	31					

### December 2022

					1	2	3
4	5	6	7	8	9*	10*	
11	12	13	14	15	16	17	
18	19	20	21	22	23	24	
25	26	27	28	29	30	31	

**SHABBAT SERVICES** 7:30 p.m. Fridays and 10 a.m. Saturdays  
 when Rabbi Joseph is in Harlingen  
**NOW is the time return to Temple!**  
**Help make the shabbat minyans!**

Services are open to everyone. **We ask that you wear a mask** whenever the CDC's COVID-19 Community Level lists Cameron County as a High transmission area. Find that information here: <https://www.cdc.gov/coronavirus/2019-ncov/your-health/covid-by-county.html>



### TEMPLE'S KOSHER FOOD POLICY

After the holidays, we will be asking families to sponsor Shabbat onegs again. Only foods marked with a kosher symbol or fresh fruits and vegetables can be served at the temple. We will be in contact soon to set up a schedule for oneg sponsorship.

# High Holiday Services

Rosh Hashanah and Yom Kippur services will be available online using the Bluejeans app and can be viewed on the rabbi's Facebook page. Each service will have the same meeting ID on Bluejeans and will not require a passcode to join. Here is the link for all services — <https://bluejeans.com/711383774>

## ROSH HASHANAH

Erev, 7:30 p.m. Sunday, Sept. 25  
Rosh Hashanah I, 10 a.m. Monday, Sept. 26  
Tashlich at Liberty Park at about 1:15 p.m.  
Rosh Hashanah II, 10 a.m. Tuesday, Sept. 27

## YOM KIPPUR

Kol Nidre 7:30 p.m. Tuesday, Oct. 4  
Morning Service 10 a.m. Wednesday, Oct. 5  
Yizkor will begin between 11:15 a.m.-12 p.m.  
Afternoon Service 3 p.m.  
Ne'ilah approximately 7 p.m. followed by  
Break-Fast

## SUKKOT

Build the Sukkah, 11 a.m. Oct. 9  
Erev service, 7:30 p.m. Sunday, Oct. 9  
Morning Service, 10 a.m. Monday-Sunday  
Oct. 10-16  
Shabbat dinner in the Sukkah, 7 p.m. Oct. 14

SHEMINI ATZERET 10 a.m. Monday, Oct. 17  
Yizkor approximately 11:20 a.m.

SIMCHAT TORAH Erev service 7 p.m. Oct 17  
Morning Service, 10 a.m.

## YIZKOR NAMES

### TO BE READ:

We will read the names of our departed family members and loved ones during the Yizkor service on Yom Kippur. Temple Beth Israel has compiled a list from past years, which is available in the foyer of the Temple. Please check your family names on the list prior to the service. If you would like to add someone, please email Dr. Stan Fisch at [stan.fisch@gmail.com](mailto:stan.fisch@gmail.com) or give the form below to Dr. Fisch or to the rabbi.

**Your donation of \$5-\$10 per name is appreciated, payable online through the Temple's website or by mail to PO Box 3398, Harlingen TX 78550.**

RELATIVES OF THE \_\_\_\_\_ FAMILY

PLEASE PRINT CLEARLY:

1. \_\_\_\_\_
2. \_\_\_\_\_
3. \_\_\_\_\_
4. \_\_\_\_\_
5. \_\_\_\_\_
6. \_\_\_\_\_
7. \_\_\_\_\_
8. \_\_\_\_\_
9. \_\_\_\_\_
10. \_\_\_\_\_

## YOM KIPPUR BREAK-FAST POTLUCK

After services on Yom Kippur, we will have a potluck break-fast supper. Please plan to bring a vegetarian or dairy dish, dessert, drinks or supplies. Contact Laurie Joseph (214-402-6270 or [laurie.b.joseph@gmail.com](mailto:laurie.b.joseph@gmail.com)) for ideas of food or supplies to bring.



# Make a pledge to support the Temple

“It is no accident that the Jewish people call themselves “Am Yisrael” — “the people of Israel” — rather than “Dat Yisrael,” or “the religion of Israel.” A sense of peoplehood has long been the defining characteristic of the Jews. On the everyday level, this focus is translated into an emphasis on the community as the primary organizing structure of Jewish life.

*Jewish texts treat participation in communal affairs not as an option, but as a religious obligation.*

Even more strikingly, one midrash likens removing oneself from the community to destroying the world. Though the structure of Jewish communities has changed according to place, time and current interests, membership in a Jewish community has always demanded a sense of shared destiny, manifested in the obligation to care for other members of the community, as well as in the joy of partaking in others’ celebrations.”

— Adapted from “The Importance of the Community (Kehilla) in Judaism: The collective is an integral part of the Jewish experience” by Rabbi Jill Jacobs



Rabbi Joseph says:

Temple Beth Israel is unique in our experience of small-town synagogues. The majority of temples this size across the South have folded when the Jewish population declined. To have a building and funds to help support it, to have a rabbi utterly committed to growing and sustaining the community — these things together are rare and precious.

*But they will not be enough if YOU are not an active participant in communal life.*

## PLEDGE TO SUPPORT THE TEMPLE WITH YOUR PARTICIPATION

- I will attend services regularly.
- I will send my children to Religion School.
- I will teach in the Religion School.
- I will help maintain Temple buildings on cleanup days.
- I will attend adult classes to better grasp the phenomenal scope of the Jewish religion.
- I will hear speakers and attend special events.

## PLEDGE TO SUPPORT THE TEMPLE WITH DUES AND DONATIONS

The Temple receives a fixed foundation grant that covers basic expenses for now, but the inflationary environment we are experiencing will certainly erode our resources. As you have doubtlessly experienced in your personal lives, everything is more expensive — from electricity and water to internet and insurance. To defray costs, we welcome support from both members and nonmembers. Please consider sponsoring the following:

- I will pay the Temple’s electric bill for one month (\$500).
- I will pay the Temple’s gas bill for one month (\$120).
- I will pay the Temple’s water bill for one month (\$100).
- I will pay the Temple’s security alarm bill for one month (\$95).
- I will pay one of the Temple’s cleaning bills (\$50).
- I will become a Temple member with the ability to vote on leadership (see a board member for more information).

Donations can be sent to Temple Beth Israel, 1702 E Jackson Ave, Harlingen TX 78550 or paid online at [harlingentemple.com](http://harlingentemple.com). Thank you for your support!

# Thank you

Donations to the Temple in the last year

October 2021	Reyes Julian, a donation Sheila Greenfeld, a donation in honor of new grandchild, Ari Ezra Greenfeld Sheila Greenfeld, in loving memory of Gertrude Greenfeld and Leslie McDaniel Fernando & Alma Russek Jr., in loving memory of Gerald Sondock
November	Ron and Serena Levine, in loving memory of Gerald Sondock Steven Zuckerman, in the memory of my mother, Evelyn Zuckerman, and in honor of Rabbi Frank and Laurie Joseph
December	Rabbi Frank & Laurie Joseph, a memorial plaque for Bert Keyes Barbara Sondock, a memorial plaque for Gerald Sondock Bill Berg & Laurel Steinberg, in loving memory of Gerald Sondock Bill Berg & Laurel Steinberg, for yizkor names James and Jane Burkholder, in loving memory of Gerald Sondock Bill Berg & Laurel Steinberg, to the Rabbi's Discretionary Fund
January 2022	Bruce Berberian, in loving memory of Susan Berberian Doyle E Davison, in loving memory of Larry Wolpin father of Aaron Wolpin
February	Richard & Judy Berkowitz, in loving memory of Larry Wolpin, father of Aaron Wolpin Greenfeld Sheila, in loving memory of Gertrude Greenfeld (yahrzeit) Bill Berg & Laurel Steinberg, in honor of Fernando Russek The Twickenham Corporation, a donation Bruce Berberian, a memorial plaque for Susan Berberian Geoffrey & Rossana Bogorad, in honor of Fernando Russek Victor and Judy DeLeon, in loving memory of Stan De Leon Natalie Selzer, in loving memory of Richard Steinberg
March	Marcela Garza de Varela, a donation The Twickenham Corporation, a donation Joe Garza, a donation Ethan D Fleishman, a donation
April	Helen Levine, a donation Victor and Judy DeLeon, a donation
May	The Twickenham Corporation, a donation Sheila Greenfeld, in loving memory of Harry Greenfeld (yahrzeit) The Twickenham Corporation, a donation Bill Berg & Laurel Steinberg, to the Rabbi's Discretionary Fund for Passover and Temple seder
June	The Twickenham Corporation, a donation
July	Julian Reyes, a donation
August	Bryan and Shirley Hewitt, to the Rabbi's Discretionary Fund in honor of Rabbi Joseph's birthday Bruce Berberian, in loving memory of Susan Berberian Abby Warshowsky, a memorial plaque for Jay David Warshowsky Bill Berg & Laurel Steinberg, to the Rabbi's Discretionary Fund in honor of Rabbi Joseph's birthday Diana Blum, to the Rabbi's Discretionary Fund in honor of Laurie Joseph and Rabbi Joseph's birthday Jeffrey Kyle Bauer, to the Rabbi's Discretionary Fund

# Rabbi Frank Joseph

---

Temple Beth Israel,  
Harlingen TX

---

Temple Beth El  
Corsicana TX

---

Irving Havurah  
Irving TX

Please excuse the absence of our congregant(s)

---

to attend High Holiday religious services on these days:

**ROSH HASHANAH:**

Sunday evening, September 25, 2022

All day Monday-Tuesday, September 26-27, 2022

**FAST OF GEDALIA**

Wednesday, September 28, 2022

**YOM KIPPUR:**

Tuesday evening, October 4, 2022

All day Wednesday, October 5, 2022

**SUKKOT:**

Sunday evening, October 9, 2022

All day Monday-Tuesday, October 10-11, 2022

**HASHANAH RABBA-SIMCHAT TORAH**

All day Sunday-Tuesday evening, October 16-18, 2022

Thank you,



Rabbi Frank Joseph

214-293-6515

frank@rabbifrankjoseph.org

# Religion School see Calendar for days the school will meet

COST	\$100 first child; \$50 additional children, payable at registration
SCHEDULE	10 a.m. Shacharit service 11 a.m.-noon Judaism class Noon-1 p.m. Lunch break 1 p.m.-2 p.m. Hebrew class for Kitah Bet and older
CLASSES	Kitah Alef — youngest students Kitah Bet — pre-Bar / Bat Mitzvah Confirmation — post-Bar / Bat Mitzvah
PARENTS	Parents are required to bring lunch for all students on a revolving schedule. A signup sheet will be provided at registration along with instructions about our Kashrut requirements. Volunteers needed! See Rabbi Frank Joseph or Fernando Russek to volunteer.

## OPENING DAY

Religion School begins

**10 a.m. October 9**

with the Shacharit service  
and registration.

For the first class, kids of all ages  
will help build and decorate  
the community sukkah.

See you  
there!



TEMPLE BETH ISRAEL RELIGION / HEBREW SCHOOL REGISTRATION FORM

PARENT \_\_\_\_\_ HOME PHONE \_\_\_\_\_  
 ADDRESS \_\_\_\_\_ CELL PHONE \_\_\_\_\_  
 CITY \_\_\_\_\_ ZIP \_\_\_\_\_ E-MAIL ADDRESS \_\_\_\_\_

STUDENT(S)	AGE	DATE OF BIRTH	COST	PAID
1)			\$100	
2)			\$50	
3)			\$50	
4)			\$50	
TOTAL				

MEDICAL INFORMATION

Student \_\_\_\_\_ Illness \_\_\_\_\_ Allergies \_\_\_\_\_  
 Student \_\_\_\_\_ Illness \_\_\_\_\_ Allergies \_\_\_\_\_  
 Student \_\_\_\_\_ Illness \_\_\_\_\_ Allergies \_\_\_\_\_  
 Student \_\_\_\_\_ Illness \_\_\_\_\_ Allergies \_\_\_\_\_  
 Physician's name \_\_\_\_\_ City \_\_\_\_\_ Phone \_\_\_\_\_  
 Emergency contact \_\_\_\_\_ Phone \_\_\_\_\_ Relationship \_\_\_\_\_  
 Are there physical or emotional conditions or restrictions of which we should be aware? Please explain. \_\_\_\_\_

PERMISSION

All the information provided here is correct.

I hereby grant permission for the above named child(ren) to participate in activities arranged by Temple Beth Israel. This will serve to release Temple Beth Israel and all its personnel, employees and representatives from liability in case of accident or injury resulting from all causes in connection with such membership or participation, including outings, field trips or other activities that necessitate travel away from the Temple. I understand that I will be informed of all activities involving travel from the Temple.

In the event that I cannot be reached in an emergency, I hereby give my permission to Temple Beth Israel representatives to secure qualified emergency medical treatment for my child as needed, including hospitalization and treatment by a physician, as chosen by a Temple representative.

Parent/guardian signature \_\_\_\_\_ Date \_\_\_\_\_

I am aware that photographs of my child may be taken at school or during Temple events. I authorize these pictures to be displayed on the Temple's Web site and bulletin at the discretion of the editor.

Parent/guardian signature \_\_\_\_\_ Date \_\_\_\_\_



---

## FROM THE RABBI

---

CONTINUED FROM PAGE 1

In the Talmud, Shabbat 119, we read, "The world only exists through the breath of schoolchildren."

From the very inception of the Jewish people, education and knowledge have been of prime importance. In the 1st Century CE, Rabbi Joshua Gamala instituted that teachers be appointed in every province and every city, and children about the age of 6 or 7 should be placed in their charge (Talmud BB 21A). Most likely, this was the earliest example of universal education from any country in recorded history.

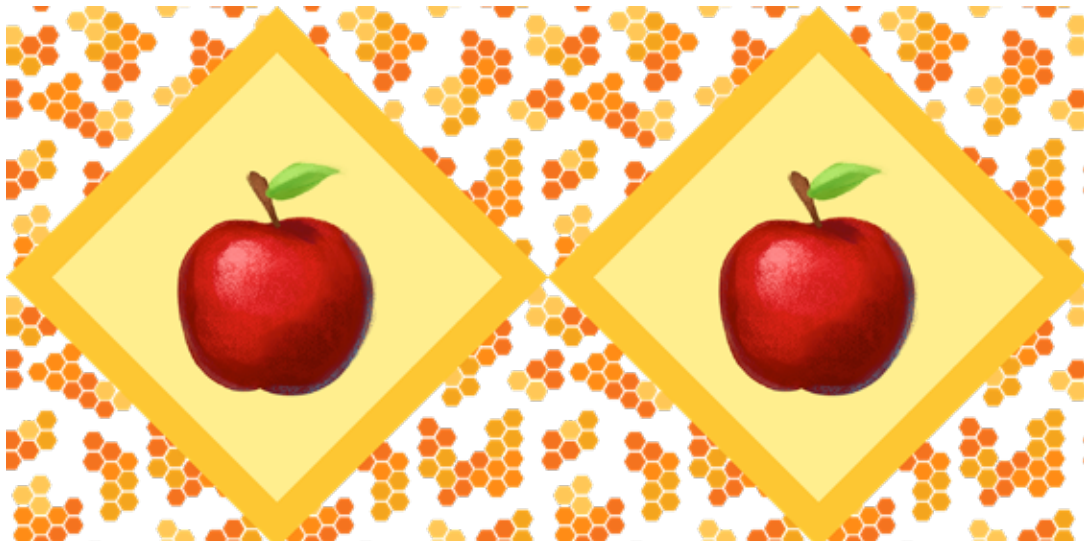
The Jewish people have continued to make education for all, but especially our young, a top priority in every community. After a two-year break due to COVID-19, we are beginning our Religion School classes once again at Temple Beth Israel. We are extremely excited about offering instruction again for all students ages 4-Confirmation. Classes will begin with the Shacharit service and construction of our congregational Sukkah on Sunday morning, 10 a.m., Oct. 9. We cordially invite all our students to come to Religion School and Hebrew classes, thereby becoming the most knowledgeable, ethical and committed Jews that we have the potential to be.

I am extremely excited to be teaching Bar and Bat Mitzvah classes again. We are also extremely excited to welcome Christine Newman, who will be teaching yoga to all interested adults on Sunday mornings during Religion School.

We read in the book of Ecclesiastes 3:4, "There is a time to embrace." As we prepare to begin the New Year of 5783, now is the time to wholeheartedly embrace the traditions of our beloved congregation Temple Beth Israel. Now is the time to commit to being involved with all our services and activities. One of the central themes of the High Holy Day season is tshuvah (returning). Let us return and work together to create the most vibrant congregation possible. As a result of our commitment, may we all be blessed with enriched and fulfilled lives. We look extremely forward to seeing everyone at our High Holy Day and fall holiday services and at Religion School.

Laurie and I wish everyone a wonderful, happy, healthy, prosperous, peaceful and fulfilling year of 5783.

Shanah tovah,  
Rabbi Frank Joseph



● Rabbi-led shabbat/festival/shacharit services

○ Jewish holiday beginning with erev

□ Religion school proposed

# Temple Beth Israel Calendar 2022-23

## July 2022

Su	Mo	Tu	We	Th	Fr	Sa
3	4	5	6	7	8	9
10	11	12	13	14	15	16
17	18	19	20	21	22	23
24	25	26	27	28	29	30
31						

## August 2022

Su	Mo	Tu	We	Th	Fr	Sa
7	1	2	3	4	5	6
14	8	9	10	11	12	13
21	15	16	17	18	19	20
28	22	23	24	25	26	27
	28	29	30	31		

## September 2022

Su	Mo	Tu	We	Th	Fr	Sa
4	5	6	7	8	9	10
11	12	13	14	15	16	17
18	19	20	21	22	23	24
25	26	27	28	29	30	

## October 2022

Su	Mo	Tu	We	Th	Fr	Sa
2	3	4	5	6	7	8
9	10	11	12	13	14	15
16	17	18	19	20	21	22
23	24	25	26	27	28	29
30	31					

## November 2022

1	2	3	4	5
6	7	8	9	10
13	14	15	16	17
20	21	22	23	24
27	28	29	30	

## December 2022

1	2	3
4	5	6
11	12	13
18	19	20
25	26	27
	28	29
	30	31

## January 2023

1	2	3	4	5	6	7
8	9	10	11	12	13	14
15	16	17	18	19	20	21
22	23	24	25	26	27	28
29	30	31				

## February 2023

1	2	3	4
5	6	7	8
12	13	14	15
19	20	21	22
26	27	28	

## March 2023

1	2	3	4
5	6	7	8
12	13	14	15
19	20	21	22
26	27	28	29
	30	31	

## April 2023

1
2
3
4
5
6
7
8
9
10
11
12
13
14
15
16
17
18
19
20
21
22
23
24
25
26
27
28
29
30
31

## May 2023

1	2	3	4	5	6
7	8	9	10	11	12
14	15	16	17	18	19
21	22	23	24	25	26
28	29	30	31		

## June 2023

1	2	3
4	5	6
11	12	13
18	19	20
25	26	27
	28	29
	30	

Jewish holiday beginning with erev  
 August 6-7 Tisha B'Av  
 Sept 25-27 Rosh Hashanah  
 Oct 4-5 Yom Kippur  
 Oct. 9 Sukkah building  
 Oct 14 Shabbat dinner in the sukkah  
 Oct 9-16 Sukkot

Oct 16-17 Shemini Atzeret  
 Oct 17-18 Simchat Torah  
 Dec 9-10 Bar/Bat Mitzvah possibly offsite  
 Dec 18-26 Chanukah  
 Dec 23 Chanukkah Shabbat service

2023  
 Feb 5 Tu B-Shevat outing  
 Feb 6 Tu B'shevat (day only)  
 March 6 Purim Megillah reading  
 April 5 Passover community seder  
 April 5-13 Passover  
 April 17-18 Yom Hashoah

April 25-26 Yom Ha'atzmaut  
 May 9 Lag B'Omer  
 May 25-27 Shavuot  
 May 27-28 Temple anniversary celebration honoring teachers